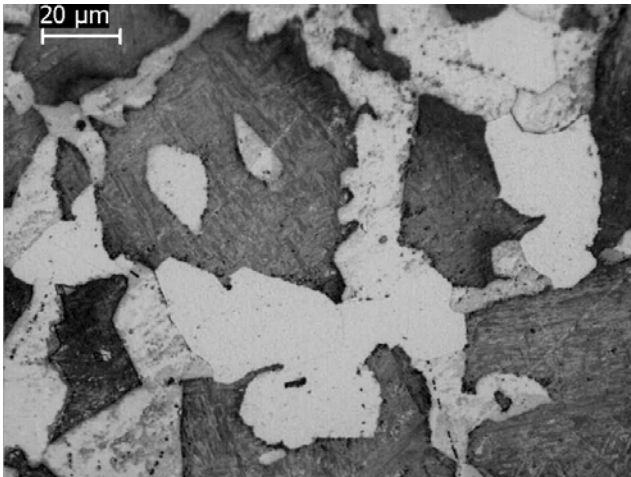
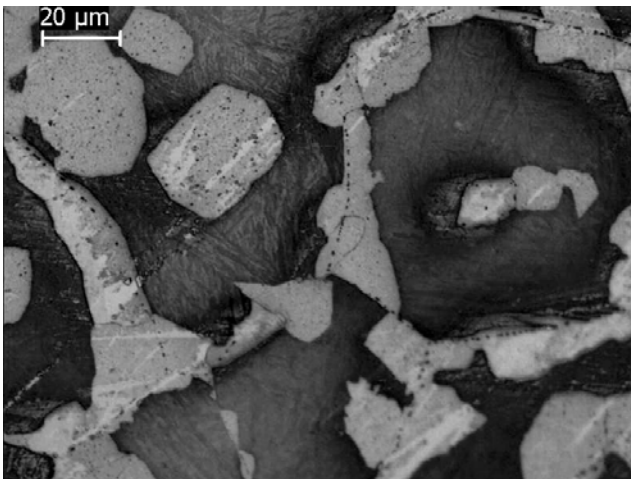


## SB5 (no Mo)

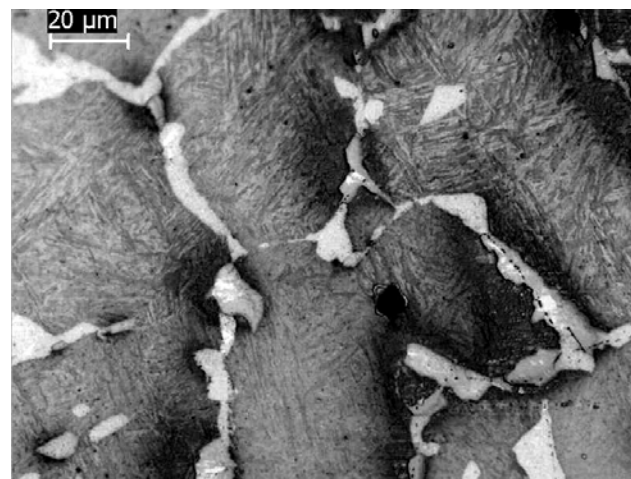
750 °C



725 °C

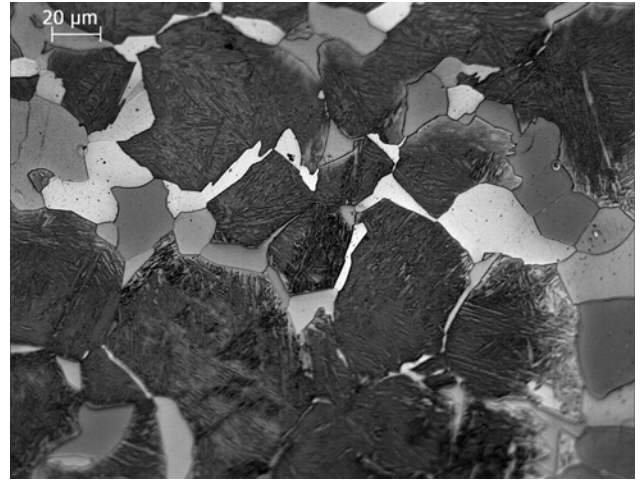


700 °C

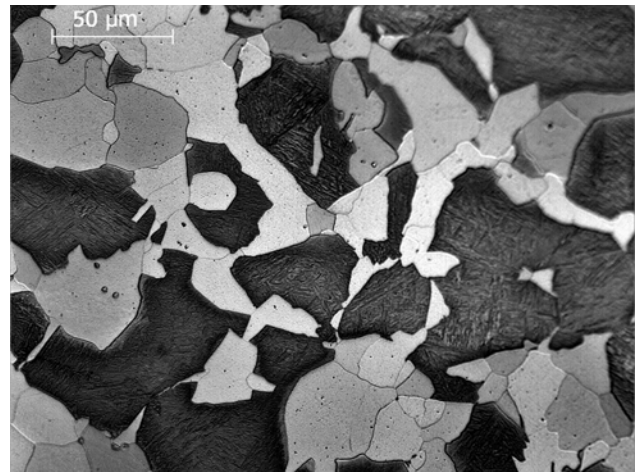


## SB2(Mo,Ti,B)

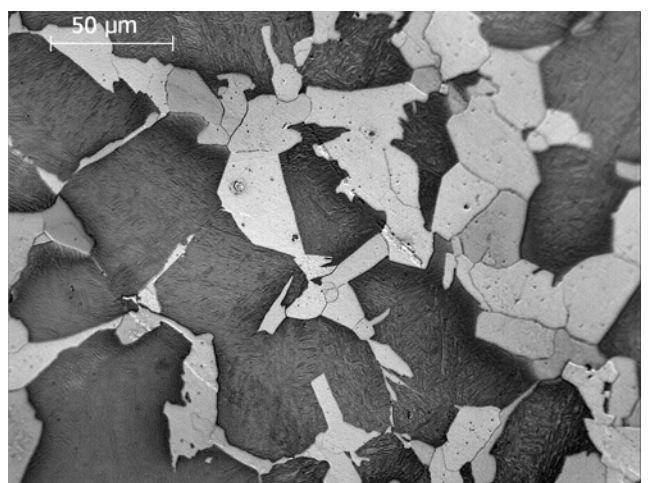
750 °C



725 °C



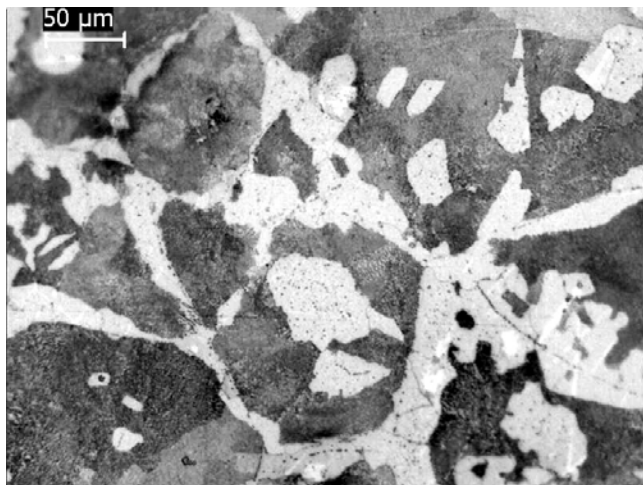
700 °C





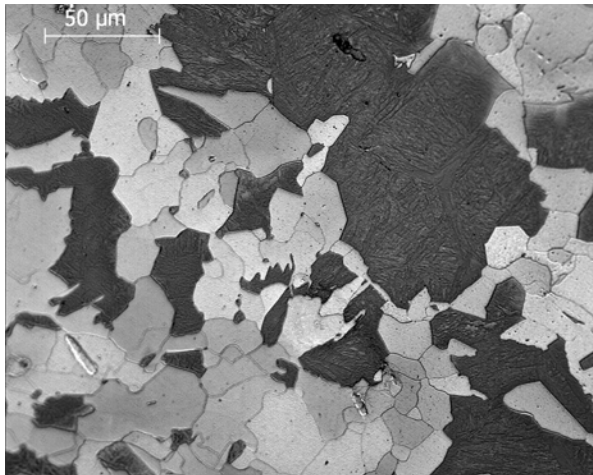
**SB5**

675 °C

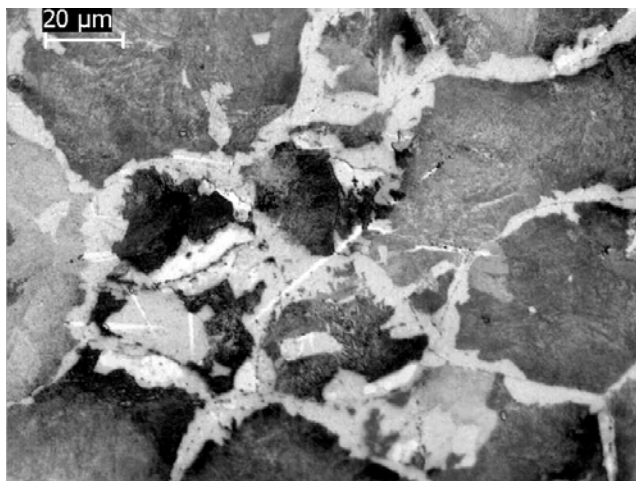


**SB2**

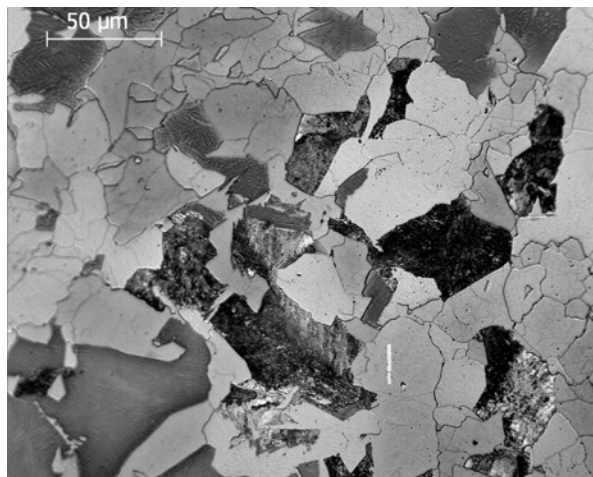
675 °C



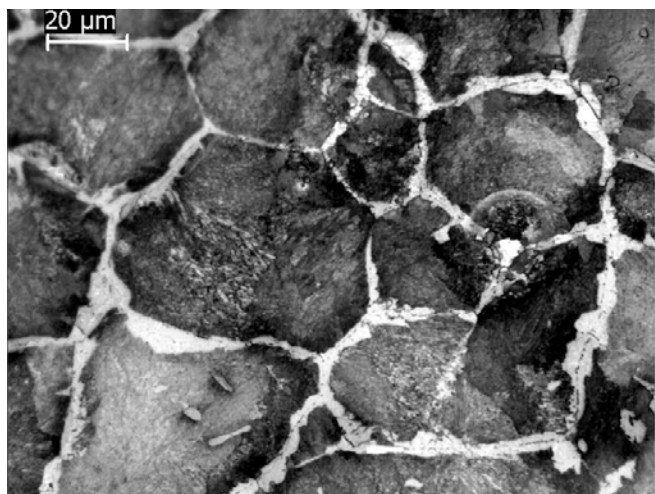
650 °C



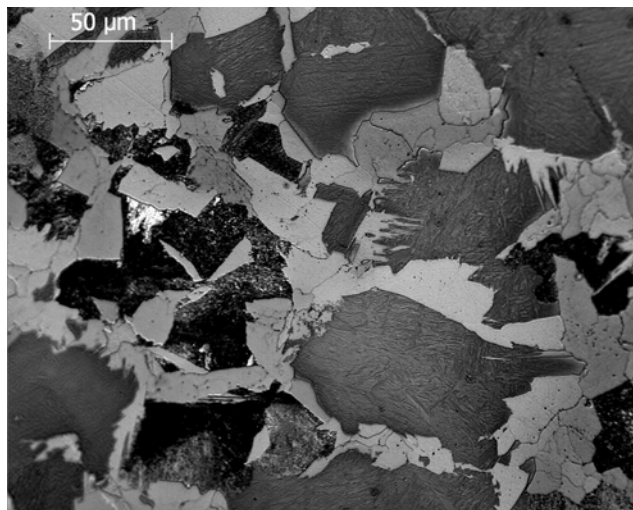
650 °C



625 °C

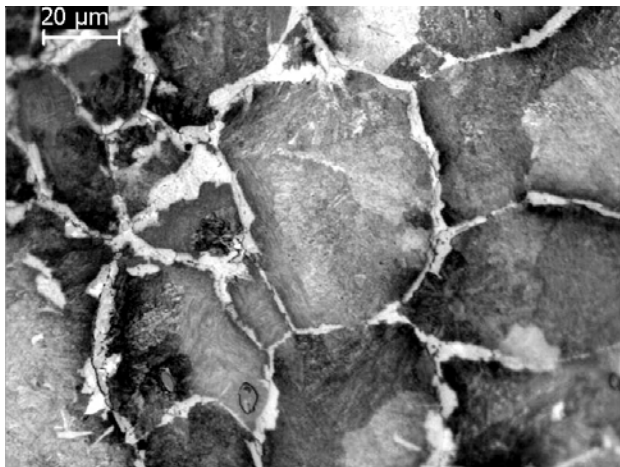


625 °C



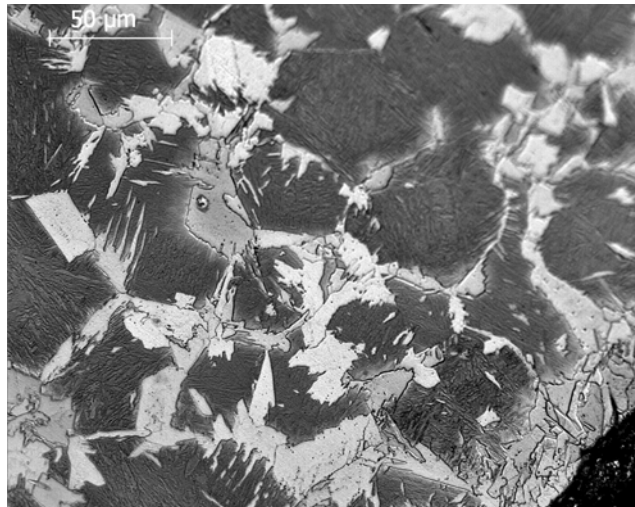
**SB5**

600 °C

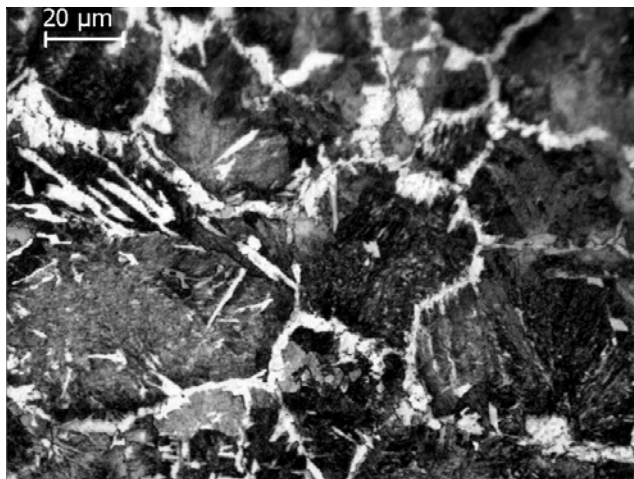


**SB2**

600 °C



575 °C



575 °C

